

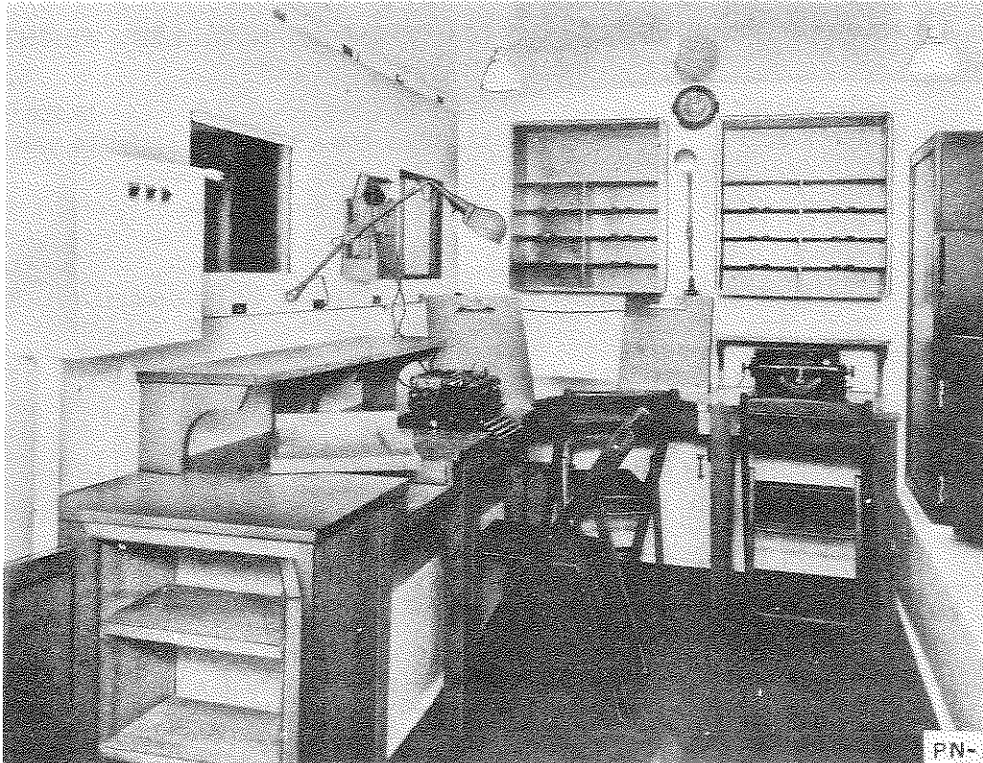
STATUS: Limited Standard  
 CLASSIFICATION OF EQUIPMENT: Restricted  
 USING SERVICE: Navy  
 DATE OF THIS SHEET: 9 Jun 52

**AN/MSQ-TYPE**

SERVICE TYPE NUMBER:

PN-1 and -2

MOBILE CODING VAN



Mobile Coding Vans PN-1 and -2 are mobile operating shelters used at advanced-base cryptographic, radio receiving, or teletypewriter stations. These vans contain required office furniture, plus teletypewriter equipment. Provision is made for the installation of desired radio equipment.

In addition to general office equipment these vans are equipped with the following:

PN-1: 5 teletypewriters, 2 Telephones EE-8, 6 coding boards, 2 telephone line terminals, and 1 Power Unit PE-95.

PN-2: 3 Model 15 and 3 Model 19 teletypewriters, 2 Model 14 Typing Reperforators, 2 Telephones EE-8, 3 Teletype Panels TT-23/SG, and 2 Power Units PE-95.

The power units provided are sufficient to operate two Mobile Radio Transmitting and Receiving Equipments MBB (series) as well as the equipment normally installed to these vans.

<b>AN/MSQ-TYPE</b>		INSTRUCTION LITERATURE: NavShips 900,099
PN-1 and -2 :SERVICE TYPE NUMBER		CLASSIFICATION OF EQUIPMENT:Restricted
MOBILE CODING VAN		USING SERVICE : Navy
		DATE OF THIS SHEET : 9 Jun 52

**MAJOR COMPONENTS**

QUANT	NAME OF COMPONENT	DIMENSIONS (IN) INSTALLED	WEIGHT (LBS)
1	Trailer K-35G* or	116 x 96 x 309	10,800***
1	Trailer K-32**	124-1/2 x 108 x 318	14,500***

\*PN-1.

\*\*PN-2.

\*\*\*Trailer loaded.

**OPERATIONAL CHARACTERISTICS**

TACTICAL USE: Advanced bases.

INSTALLATION: Ground, mobile.

CAN COMMUNICATE WITH: These are shelters used to house primary and related communication apparatus.

**TECHNICAL CHARACTERISTICS**

TYPE OF SIGNAL: Af, voice and start-stop d-c (teletypewriter).

TYPE COMMUNICATION CIRCUITS: Teletypewriter, telephone.

POWER REQUIREMENTS: 10 kw, 115 v, 60 cyc, 1 phase. (Normally supplied by the PE-95 Power Units).

**PHYSICAL CHARACTERISTICS**

Mobile Coding Van PN-2 measures 124-1/2 x 108 x 318 inches, net weight 14,500 pounds, volume 2,428 cu ft, 60.7 ship tons. (See list of Major Components above).