

STATUS: Limited Standard

CLASSIFICATION OF EQUIPMENT: Unclassified

USING SERVICE: Army

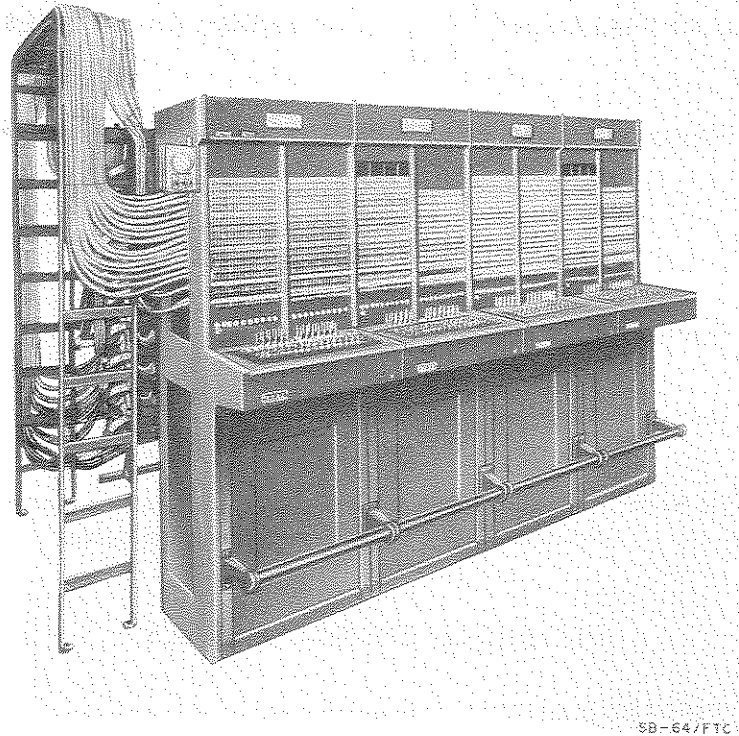
DATE OF THIS SHEET: 7 Feb 52

AN/FTC-TYPE

AN/COMP TYPE NUMBER:

SB-64/FTC

SWITCHBOARD



Switchboard SB-64/FTC is a medium-size central-office type, multiposition, manual, 640-line (maximum capacity) switchboard equipment used in fixed plant applications.

This equipment consists essentially of a commercial (Western Electric Co No. 12 640-line) exchange switchboard which is a 4-position equipment constructed sectionally and having 2 jack panels per position, each position constituting a self-contained unit. It may be equipped with a total of 640 common battery and/or magneto lines with lamp signaling multiplied on a 2-panel basis, and 120 2-way ring-down trunks; 15 universal cord circuits are wired per position (the normal equipment for each position is 13 cords) with lamp supervisory equipment on cord circuits.

It also is equipped with dial and dial cord, and ringing current is supplied by a separate power unit. It uses a main distributing frame supplied separately which is connected to this switchboard by cabling.

Operates on 48-v battery.

AN/FTC-TYPE		INSTRUCTION LITERATURE: None
SB-64/FTC	AN/COMP TYPE NUMBER	CLASSIFICATION OF EQUIPMENT: Unclassified
SWITCHBOARD		USING SERVICE : Army
		DATE OF THIS SHEET : 7 Feb 52

MAJOR COMPONENTS

QUANT	NAME OF COMPONENT	DIMENSIONS (IN) INSTALLED	WEIGHT (LBS)
-------	-------------------	---------------------------	--------------

(Equipment consists only of a single major operating component.)

OPERATIONAL CHARACTERISTICS

TACTICAL USE: Permanent fixed plant applications.

INSTALLATION: Ground; fixed station.

CAN COMMUNICATE WITH: Provides multiposition manual central office facilities in fixed plant installations or in systems serving fixed plan.

TECHNICAL CHARACTERISTICS

NUMBER OF SWITCHBOARD POSITIONS: 3 (expandable).

MAXIMUM: As required.

MINIMUM: 3.

NUMBER AND TYPE OF CIRCUITS: (Per position.)

Number of cord circuits: 15.

Number of line circuits: 640.

Number of trunk circuits: 120.

POWER REQUIREMENTS: 48 v dc.

PHYSICAL CHARACTERISTICS

Switchboard SB-64/FTC weighs 3,360 pounds net, volume 112 cu ft. Packed for export shipment: total weight 7,500 pounds, total volume 480 cu ft. 12 ship tons.